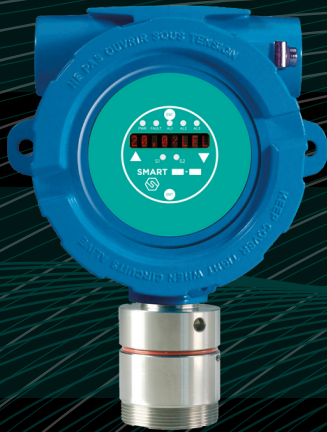
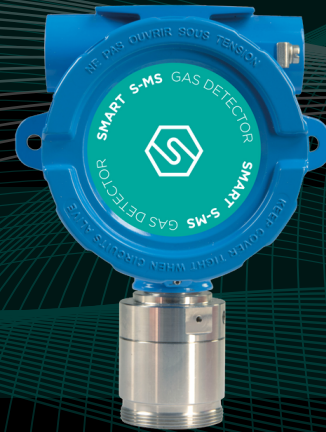


# SMART S

Progettato per gli ambienti più difficili e aggressivi



SMART S-SS



SMART S-MS

- Gas infiammabili, tossici, CO<sub>2</sub>, VOC e refrigeranti
- Sensore catalitico, infrarosso, a cella elettrochimica e PID

- Gas infiammabili e refrigeranti
- Sensore catalitico e infrarosso

SIL2 (3)



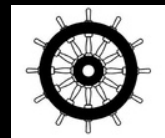
2014/34/EU



SIL2 (3)

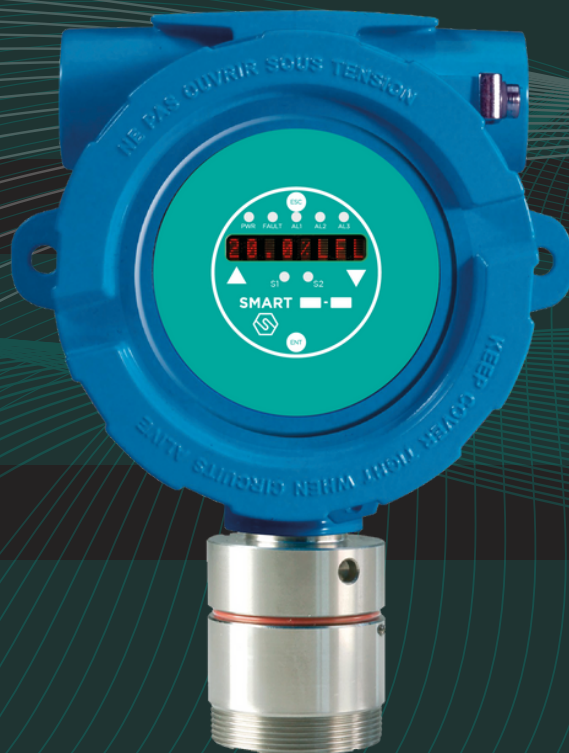


2014/34/EU



sensitron

# RILEVATORE SMART S-SS



- Disponibile per gas infiammabili, tossici, CO<sub>2</sub>, VOC e refrigeranti
- 4-20mA, RS485, relè, modem HART
- Certificato HW SIL2 e SW SIL3, ATEX cat. 2 antideflagrante e IS, IECEx
- Display a LED

**SIL2 (3)**



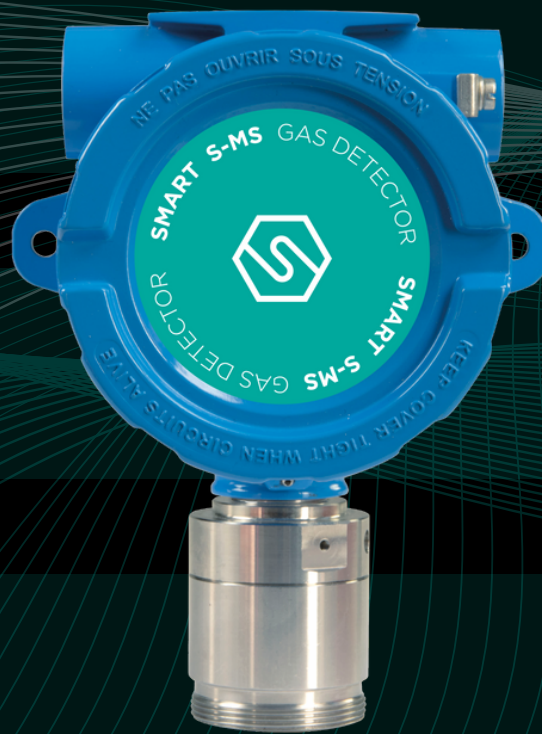
2014/34/EU

**HART**  
COMMUNICATION PROTOCOL



sensitron

# RILEVATORE SMART S-MS

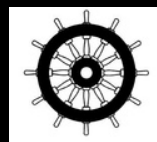


- Disponibile per gas infiammabili, tossici e refrigeranti
- 4-20mA, RS485, relè
- Certificato HW SIL2 e SW SIL3, ATEX cat. 2, IECEx, CCS e MED

SIL2 (3)



2014/34/EU



sensitron



# Rilevazione gas in industria pesante



## Sistema:

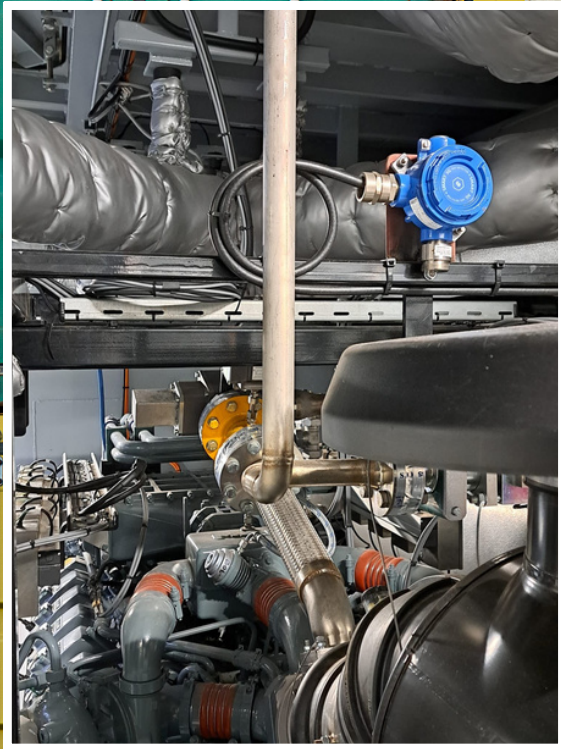
- SMART S-SS
- MULTISCAN++S2  
Unità di controllo



sensitron

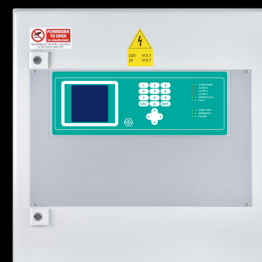


# Rilevazione gas in ambiente marine



## Sistema:

- SMART S-MS
- MULTISCAN++MED



sensitron